



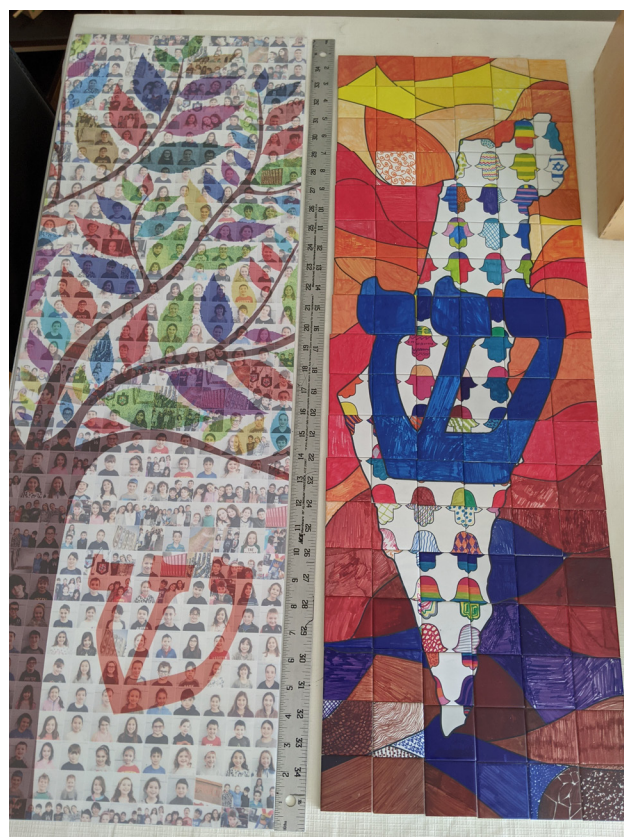
Learning by Doing: CRS Students Create Two Mega Mezuzot for School Wing

By Rabbi Alex Freedman

Over the past two years, the Cohen Religious School students have gotten up close and personal with the Mezuzah. It began when I spent time with each class teaching the how's and why's of the Mezuzah - inside and out. We unrolled real parchment scrolls (Klafim); we read the words of the Shema which instruct us to place these on our doorposts; we toured some of the Mezuzot hanging in Beth El.

Then it was time to create. The goal was for the students themselves to contribute to two oversized Mezuzot - 12 x 36 inches. In our CRS Mezuzot, the kids colored in the letters of the Shema text on poster board (while these Mezuzot are technically not Kosher, they fulfill the spirit of learning, L'Shem Hinuch). The younger kids had their pictures taken and integrated into a gorgeous photo mosaic of a tree. The older students each colored a square that was transferred to a tile, and these tiles formed a map of Israel decorated with Hamsas. Each tile is unique, yet they join together to form one image. Like their tiles, each student has a distinct voice, yet they join together with others to make one CRS community.

A huge Kol HaKavod shoutout goes to Dr. Alicia Gejman and a team of parent volunteers: Melissa Block, Melissa Buzin,



Nami Goldenberg, Jori Graham, Lori Gross, Sandy Gross, and Shayna Plankar.

On the last day of school, these two Mezuzot were dedicated in a schoolwide virtual ceremony. Plaques were hung alongside them naming all the children. One hangs by the Grossinger Brickman Activity Center, while the other stands by the Natkin Seminar Room. For years to come, CRS students and others will enjoy these beautiful additions. Not even a pandemic could stop our efforts.

INSIDE THIS ISSUE

President's Corner	2
Shabbat Schedule	3
Staff Tributes/Announcements.....	4
Informal Education.....	5
Ritually Speaking.....	5
Cultural & Learning Center	6
History Corner	6
Development	7
Pre-School	7
Youth Community	8
Formal Education.....	9
Sisterhood.....	10
Sisterhood Gift Shop	10
Membership.....	11
New Director of Congregational Learning.....	11
HAZAK.....	12
Environmental Corner.....	12
All in the Beth El Family	13
Todah Rabbah.....	14
Events at a Glance	18
Social Action.....	19
Chef Laura	20

North Suburban Synagogue Beth El
1175 Sheridan Road
Highland Park, IL 60035
(847) 432-8900 | www.nssbethel.org

President's Corner

Putting the Last Two Years into Words

By Ron Goldberg, Outgoing NSS Beth El President



My Friends,

Over the past two years I have been privileged to work with the most amazing lay leaders, volunteers, clergy and staff. Every single one of you has met the challenge of the pandemic.

You have grown as professionals and as lay leaders and volunteers. You work harder, smarter and more efficiently than ever. Your incredible creativity manifested itself in services, programs,

classes and events that kept Beth El 'open' and worthy of membership, even when it was closed.

As a congregation, we have all grown personally and spiritually. Family has never meant more. Celebrating our High Holiday traditions at home and at Shul has never meant more. We have 'Loved our Neighbor' and shown such caring and sensitivity for each other. We have reached out and touched so

many individuals. Our community is enriched.

I am so proud of NSS Beth El. What a bright future we have!

Thank you all.

Ron

p.s. Eileen, thank you for your wondrous love and unshakeable support through the ups and downs of the last two years. Love you so.

Looking Ahead to the "New" Normal

By Stuart Hochwert, Incoming NSS Beth El President



My name is Stuart Hochwert, and I am humbled and honored to have been elected to serve as the next President of NSS Beth El. Our congregation is indeed fortunate to have outstanding clergy, a great professional staff, a hardworking and caring Executive

Committee and Board of Directors along with a fabulous community. It is no wonder that Beth El has developed a reputation for being one of the leaders in the Conservative movement.

My wife Barbara and I were born and raised in Chicago, in West Rogers Park.

I attended Congregation KINS and was quite active at the synagogue. From page turner for High Holiday services, to fixing damaged prayer books for the Rabbi, to enjoying the NCSY Youth Group, my synagogue was a special place for me growing up.

Continued on page 8

Recent Happenings



Purim Celebration and Car Parade with "Wild Things"



A fun Outdoor Havdalah Dance Party for Young Families



Shabbat Schedule

Daily Service

	Morning	Evening
Sun	8:45 am	7:30 pm
Mon	7:30 am*	7:30 pm
Tues	8:15 am	7:30 pm
Wed	8:15 am	7:30 pm
Thurs	7:30 am*	7:30 pm
Fri	8:15 am	6:00 pm
Sat	9:00 am*	Varies

*We will hold in-person minyan on Monday and Thursday mornings. All services, (except Shabbat morning) including those in-person, will be streamed via Zoom using the link on the website. You must sign up to attend Shabbat services.

Check out the Livestream page on our website www.nssbethel.org for Shabbat morning services.

Clergy:

Rabbi Michael Schwab**
Rabbi Alex Freedman
Hazzan Benjamin A. Tisser
Hazzan Jacob Sandler
Rabbi Vernon H. Kurtz,
Emeritus

Every Shabbat

9:00 am Shacharit Service

10:30 am Junior Congregation

Services for students in 2nd - 6th grade.

11:00 am Tot Shabbat

Year-round services for families with children 1st grade and younger.

Please note:

For weekly Torah and clergy commentary, please open your weekly Thursday Kol Beth El emails.

For classes, meetings and other scheduled events, please refer to our website calendar or call the synagogue office at (847) 432-8900.

**Rabbi Schwab occupies the Vernon H. Kurtz Senior Rabbinic Chair

June

Friday, June 4

6:00 pm Kabbalat Shabbat
8:05 pm Candle Lighting

Saturday, June 5

Parashat Sh'lach
9:00 am Shabbat Service
9:16 pm Shabbat Ends
9:20 pm Ma'ariv
9:40 pm Havdalah

Friday, June 11 Rosh Hodesh Tamuz

6:00 pm Kabbalat Shabbat
8:09 pm Candle Lighting

Saturday, June 12

Parashat Korach
9:00 am Shabbat Service
9:21 pm Shabbat Ends
9:25 pm Ma'ariv
9:45 pm Havdalah

Friday, June 18

6:00 pm Kabbalat Shabbat
8:12 pm Candle Lighting

Saturday, June 19

Parashat Chukat
9:00 am Shabbat Service
9:24 pm Shabbat Ends
9:25 pm Ma'ariv
9:45 pm Havdalah

Friday, June 25

6:00 pm Kabbalat Shabbat
8:13 pm Candle Lighting

Saturday, June 26

Parashat Balak
9:00 am Shabbat Service
9:24 pm Shabbat Ends
9:25 pm Ma'ariv
9:45 pm Havdalah



July

Friday, July 2

6:00 pm Kabbalat Shabbat
8:12 pm Candle Lighting

Saturday, July 3

Parashat Pinchas
9:00 am Shabbat Service
9:23 pm Shabbat Ends
9:25 pm Ma'ariv
9:45 pm Havdalah

Friday, July 9

6:00 pm Kabbalat Shabbat
8:10 pm Candle Lighting

Saturday, July 10 Rosh Hodesh Av

Parashat Matot-Masei
9:00 am Shabbat Service
9:20 pm Shabbat Ends
9:20 pm Ma'ariv
9:40 pm Havdalah

Friday, July 16

6:00 pm Kabbalat Shabbat
8:06 pm Candle Lighting

Saturday, July 17

Parashat Devarim
9:00 am Shabbat Service
9:15 pm Shabbat Ends
9:15 pm Ma'ariv
9:35 pm Havdalah

Friday, July 23

6:00 pm Kabbalat Shabbat
8:01 pm Candle Lighting

Saturday, July 24

Parashat Vaetchanan
9:00 am Shabbat Service
9:08 pm Shabbat Ends
9:10 pm Ma'ariv
9:30 pm Havdalah

Friday, July 30

6:00 pm Kabbalat Shabbat
7:54 pm Candle Lighting

Saturday, July 31

Parashat Eikev
9:00 am Shabbat Service
8:59 pm Shabbat Ends
9:00 pm Ma'ariv
9:20 pm Havdalah

August

Friday, August 6

6:00 pm Kabbalat Shabbat
7:45 pm Candle Lighting

Saturday, August 7

Parashat Re'eh
9:00 am Shabbat Service
8:49 pm Shabbat Ends
8:50 pm Ma'ariv
9:10 pm Havdalah

Friday, August 13

6:00 pm Kabbalat Shabbat
7:36 pm Candle Lighting

Saturday, August 14

Parashat Shoftim
9:00 am Shabbat Service
8:39 pm Shabbat Ends
8:40 pm Ma'ariv
9:00 pm Havdalah



Friday, August 20

6:00 pm Kabbalat Shabbat
7:25 pm Candle Lighting

Saturday, August 21

Parashat Ki Teitzei
9:00 am Shabbat Service
8:27 pm Shabbat Ends
8:30 pm Ma'ariv
8:50 pm Havdalah

Friday, August 27

6:00 pm Kabbalat Shabbat
7:14 pm Candle Lighting

Saturday, August 28

Parashat Ki Tavo
9:00 am Shabbat Service
8:15 pm Shabbat Ends
8:15 pm Ma'ariv
8:35 pm Havdalah

With Gratitude and Good Wishes to Our Departing Colleagues

To Hazzan Ben Tisser from Rabbi Michael Schwab on behalf of our entire staff

"Halleluyah! Praise and sing to Gd in his Sanctuary... Praise Gd with flute and strings... Let every breath of life praise Gd, Halleluyah" (Psalm 150). For the last six years, Hazzan Tisser has uplifted our congregation and helped us to praise Gd, to pray, to sing and to sanctify holy moments in both our



individual lives, as well as in the life of our community. His beautiful voice, his musicality and his passion inspired so many of us and enhanced the spirituality of our prayers and the joy of our celebrations. We are ever grateful for all of his contributions to our community through his leadership, teaching, event planning, pastoral care, davening and even tech support. It is bittersweet to say goodbye, for while we will miss Hazzan Tisser, we are happy that he has found a position at another Beth El, in Minneapolis. We wish him and Robyn great hatzlacha - success - in their endeavors and look forward to their future visits to Chicagoland. May Hazzan Tisser go from Hayil el Hayil, from strength to strength!

To Dr. Alicia Gejman from Rabbi Alex Freedman on behalf of our entire staff

יְהוֹשֻעַ בֶּן פְּרָחִיָּה אוֹמֵר, עֲשֵׂה לָךְ רֵב, וְקִנְיָה לָךְ חֵבֵר, וְהָיָה דָן אֶת כָּל הָאָדָם לְכַף זְכוּת:



Joshua ben Perahiyah used to say: "Appoint for yourself a master teacher; acquire for yourself a friend; and give all people the benefit of the doubt." (Talmud: Pirkei Avot 1:6)

Dr. Alicia Gejman modeled all three parts of this Mishna, and the CRS/NSSBE were the

lucky beneficiaries. **Appoint for yourself a master teacher:** Dr. Gejman was an exemplary teacher - to our kids, teens, whole families, CRS teachers, and our adult learners. Over a wide range of subjects and student ages, she transmitted the material in an accessible and exciting way. **Acquire for yourself a friend:** Dr. Gejman formed strong relationships - always friendly - with the many CRS families over 10 years, along with a long list of lay leaders and NSSBE staff. **And give all people the benefit of the doubt:** Dr. Gejman never made us feel judged or less than. In her kind and gentle manner, she was always positive and sought out the best in each of us. Thank you, Dr. Gejman. While we will miss you, we hope that you enjoy your well-earned retirement!



Jeff is pictured on far left.

To Jeff Dreifuss from Jeff Baden on behalf of our entire staff

We are sorry to have to say goodbye to Jeff Dreifuss, our Accounts Receivable Manager. Jeff, who has been with Beth El for the past 6 years, is leaving at the end of June to spend more time with his family. Abe Rotbart, our Director of Finance shared, "Jeff always went that extra mile to make sure member accounts were up to date in a courteous, professional manner." Jeff shared that he is really going to miss Beth El and the many close relationships he has made with our members through the years. He is very appreciative of the opportunity he was given to be a part of the Beth El team, and looks forward to this new chapter in his life.

Kathy Stinson, who has been with Beth El for more than 17 years, will assume many of Jeff's membership database and accounts receivable duties.

A Warm Welcome to Our Newest Staff Members



Hazzan Jacob Sandler

NSS Beth El is excited to announce that Jacob Sandler has accepted the position to become our next Hazzan. The Hazzan Search Committee was very impressed with his skills, talents, enthusiasm and knowledge. Congregational feedback from his in-person visit was also very positive. He received his Master of Sacred Music and Cantorial Ordination from the

Jewish Theological Seminary just last month. Prior to this he had been the Cantorial Intern at New City Jewish Center in New City, NY. Jacob also has a long history and held multiple positions with Camp Ramah in the Berkshires, NY. With eager anticipation, we look forward to his arrival in July.



Director of Formal Education, Anna Besser

We are excited to announce that on July 1st, Anna Besser will assume the position of Director of the Cohen Religious School. Anna will succeed our beloved educator, Dr. Alicia Gejman, who will be retiring after serving Beth El for more than 10 years.

Anna, a graduate of the Jewish Theological Seminary, is a self-motivated, highly skilled professional with over 20 years of educational leadership experience. For the past 15 years, Anna has served as the Education Director of Congregation Beth Judea in Long Grove.

Informal Education



Study More, Act More

By Ali Drumm, Director of Informal Education

“Rabbi Tarfon and the Elders were once reclining in the upper story of Nithza’s house in Lod, when this question was posed to them: Which is greater, study or action?”

Rabbi Tarfon answered, saying: Action is greater. Rabbi Akiva answered, saying: Study is greater. All the rest agreed with Akiva that study is greater than action because it leads to action.”

– *Babylonian Talmud, Tractate Kiddushin 40b*

The learning and action that our community has taken this year to translate loving our neighbors past an initiative is incredible. Our Young Family Programming Committee has begun an initiative of outreach to families to continue to welcome them into our community. Our Melton class “Social Justice: The Heart and Soul of Judaism” has been focused on not only issues of racial justice, but issues with our environment, poverty, homelessness, and labor. Our Social Action and HAZAK committees have

brought attention to challenges that our community faces and deepened relationships both within Beth El and with our neighbors around Chicagoland.

We are going to be learning more in the next two months about racial injustice and the history of gender diversity in the Jewish community.



May is Jewish Mental Health Awareness month and Stephanie Kallish, our talented young member, has used her voice to raise our congregational consciousness about the challenges of anxiety and depression, and how it has been amplified throughout the

pandemic.

In June we will be learning with Rabbi Schwab and Robbie Medwed, Atlanta-based Jewish educator, about historical perspectives on gender in Jewish text in support of Pride Month.

As the Love Your Neighbor committee transitions its work, we are responsible to continue to make our community inclusive beyond initiative, and to model the welcoming we all want to receive.

The learning and outreach have been so simultaneously important, as one leads to another. In the fall, my colleague Dr. Alicia Gejman taught a Hassidic tale of the Gerer Rebbe that pushes us to continue to check up on each other, and make sure that we don’t assume everything is ok with our friends and neighbors. I wish for us all this summer that we can be expansive in both our learning and our taking action.

Ritually Speaking



A Summer Torah Reading Challenge for All

By Barbara Barnett, Ritual Director

The gift of Torah. We just celebrated receiving this gift at the holiday of Shavuot, where we placed ourselves (virtually) at Sinai, re-reading the Ten Commandments from the scroll, standing as they are chanted from the readers’ desk.

The Torah belongs to us all—individually and as a community, as a people—to cherish, to learn from, and to pass from one generation to the next. One way to enhance the connection to Torah is by learning the skill chanting from the scroll.

Some of us learned long ago (often with a recording) to chant at our own B’nai Mitzvah; some of us learned specifically for their child’s (or grandchild’s) simcha. Some of us never have, feeling intimidated, or believing we just don’t have the Hebrew skills or the voice to properly chant in public in



front of the congregation.

Standing before the Torah, chanting from it, is an awesome experience—physically connecting with the ancient, yet still relevant, text, inscribed in the scrolls and in our hearts and minds. But it can, for many, be a daunting task—an impossible task. But it doesn’t have to be that way.

So, I want to offer you a challenge—a Torah reading challenge.

NSS Beth El is here to help you learn—wherever you are, and whatever your skill at this moment in time. And summer is the perfect time.

Better yet, find a friend and pick a

date (over the summer or beyond) when you can both chant from the Torah and we will make it happen!

If your Hebrew skills are rusty, we can help you improve them. If you haven’t read

Torah since your own bar or

bat mitzvah (or never had the chance) we can teach you how (including recordings and PDFs) and have your back every step of the way. If the Torah readings seem way too long to master, we’ll be happy to split off a shorter reading for you (or, share a reading with a friend). If you are seasoned reader, we invite you to challenge yourself to take a slightly longer reading—or to read a bit more often.

Intrigued? Want to take me up on my challenge and become part of the NSS Beth El Torah Reading team? Email me BBarnett@nssbethel.org or phone me 847-432-8900 x223.

Honoring Rachel Kamin

Joseph and Mae Gray Cultural and Learning Center Director

NSSBE is pleased to announce that CLC Director Rachel Kamin has been named the **2021 Fanny Goldstein Merit Award Winner** by the Association of Jewish Libraries. "Over the years, Rachel has contributed so much to the Association of Jewish Libraries, to the field of Judaic librarianship, and to librarianship as a profession overall. Rachel's passionate devotion to public service is a model for us all, and she truly personifies the values and legacy of the Award's namesake, Fanny Goldstein," said committee chair Zachary Baker.

The Fanny Goldstein Merit Award, named for the librarian, social activist and founder of National Jewish Book Month, is bestowed in recognition of loyal and ongoing contributions to the Association of Jewish Libraries and to the profession of Judaica librarianship.

Fanny Goldstein devoted her life to books and community. She was the first female Judaic librarian, and is best known as the founder of Jewish Book Week.

Rachel began her career as the Director of the Libraries & Media Center at Temple Israel in West Bloomfield, Michigan in 1997. After a brief



stint working in a public library, Rachel succeeded Cheryl Banks (a past recipient of the Fanny Goldstein Merit Award) as the Director of the Joseph and Mae Gray Cultural & Learning Center at Beth El, where she has worked since 2008.

Rachel will receive the Fanny Goldstein Merit Award during the AJL

General Membership Meeting on Sunday, June 27. We will provide details for members to attend virtually.

Beth El will host a fundraiser on July 20 from 6:30-7:30 to honor Rachel and support her work in the Cultural and Learning Center. Tickets are \$36 to attend. We will offer several other levels of giving. Please watch for synagogue communication that highlights the details of our event.

Rachel is an incredible asset to our community as our Director of the Joseph and Mae Gray Cultural and Learning Center. Her work with our museum and library is superb, and brings heightened awareness of the depth of Jewish culture to our lives. We look forward to supporting her and her work in July and guaranteeing that the library remains the jewel at the center of the synagogue.

Beth El History Corner: Can You Name That Member?

By **Mort Steinberg**, North Suburban Synagogue Beth El Historian

With over 2000 original artifacts spanning the past century, the Beth El archives is a treasure trove of the congregation's history. But hundreds of photographs in the collection do not identify the individuals portrayed. Starting today, we will publish some of these photographs and we seek your help in identifying the people in the picture. A brief summary of the circumstances surrounding the picture will be provided. Please contact Rachel Kamin at rkamin@nssbeth-el.org if you know the identity of the person in the photo. Successful respondents will be acknowledged in the next bulletin. Here is the first BE History Challenge:

The tradition of holding a spring fundraising

event at the synagogue began on Sunday evening, May 17, 1953 when the congregation was invited to Beth El's "first annual Dinner Dance" held in the Terrace Casino of the old Morrison Hotel in downtown Chicago. Construction of the new school building had just been completed and although president Harold Blumberg had arranged a \$50,000 loan for the project, funds were inadequate to pay the contractor. The formal event to raise funds to "equip" the school was chaired by Charles

Podolsky, Saul Pohn and Jack Borkan and for many years thereafter the annual Dinner Dance was a social highlight of the congregation. But the identity of the master of ceremonies at that first Dinner Dance, pictured here, is unknown. Do you know who he is?



Remembering Myrna from Rissman Kol Ami Collection

With great fondness, we remember Myrna Schwartz who passed away in March. Myrna and her husband Ed joined Beth El in the early 1970s, having moved to Highland Park from Landsdale, PA.

Cara Madansky, past Sisterhood president, aptly recalled Myrna's "golden hands." She was a master of needlecrafts (sewing, embroidery, and needlepoint) and joined in a Sisterhood project sewing five wall hangings, designed by fiber-artist Ina Golub, that reflect life in Jewish communities around the world.

With her able assistant, Ed, Myrna pioneered exhibits for the Kol Ami Museum, lovingly displaying ceremonial objects. She created exhibits on subjects ranging from prominent Jewish Chicagoans to the Tribes of Israel, sometimes even adding props she had made herself. For one exhibit, she created a three-dimensional reconstruction of the Second Temple, complete with Biblical figures.

She worked tirelessly to preserve an 18th century *parochet*, sewing yards of netting over fragments of silk where the Nazis had stripped out gold thread.

After Myrna's repairs, Ed mounted the *parochet* on a wooden stretcher and covered it with plexiglass. (The *parochet* is currently in storage until it can be professionally re-framed.) Myrna was a creative soul with a passion for the museum and its artifacts. She was a devoted mentor who gave her all to bring prominence and recognition to Beth El's cultural history.

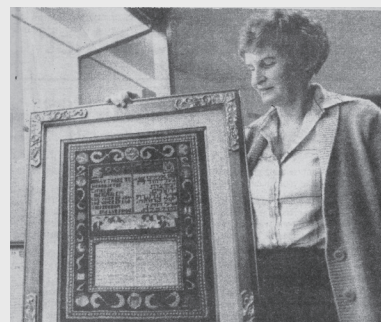


Photo Caption: Myrna Schwartz with an exhibit she curated for the Rissman Kol Ami Museum in 1979, featured in the Highland Park News.

Membership & Development



From Strength to Strength

By Judy Berkeley, Membership & Development Director

It's time to say goodbye and thank you to **Kim Ephraim**, who served as our small but mighty tireless leader as our VP of Fundraising & Development for the past two years. She has agreed to stay on our Development committee as a resource, and we are so grateful for that!

Some of Kim's unprecedented accomplishments include:

- The Installation of Rabbi Michael Schwab, where we raised \$100,000 over and above our goal!
- Bonim – Along with Larry Pachter, Kim developed our "Bonim" donors levels from \$5,000 to \$25,000 and doubled our number of donors to reach 50 adding over \$163,000 to our annual fundraising dollars this year!
- This past Spring Fundraiser, we honored our COVID-19 Heroes and exceeded our fundraising goal by 150%!



- And...she changed the name of the title's position from VP, Finance to VP, Development & Fundraising, to more accurately reflect our accomplishments.

Filling Kim's role will be, **Jackie Melinger**:

"As the new VP of Development and Fundraising, I am very excited to get started where Kim Ephraim ended her successful work. Co-chairing the HAZAK Committee for several

years and enhancing our outreach this past year truly highlighted the generosity of the Beth El community for me.

Over the last 20 years, my family has called Beth El home, starting with the Steinberg Pre-School and continuing through many lifecycle events.

The clergy and members of North Suburban Synagogue Beth El have stood by us in good times and in difficult times. This is a vibrant and caring community with talented leaders and a wonderful vision and purpose. We strive to be the place our members can turn to throughout their lives for prayer, education and community. I hope to use the strength of past Development and Fundraising Officers to push forward in strength for the future of North Suburban Synagogue Beth El. "

Pre-School



The Silver Lining

By Kory Goldenberg, Paul S. and Sylvia Steinberg Pre-School Director

Here at the Steinberg Pre-School we have had a year unlike any other.

With health and safety as our guiding light since March 2020, it has been quite a journey...

And while this past year brought significant challenges, it has also given us opportunity...

Through the school building closing...

We found virtual learning to keep us connected to children, to our families and as a staff.

Through social distancing guidelines...



We found ourselves outside this Fall, in nature, teaching and learning in new ways.

Through the limits on the number of people gathering...

We found more mindful and child-centered Passover and Yom Ha'atzmaut celebrations.

To our Parent Auxiliary who has worked tirelessly to welcome new families and bring our community together through social action projects...we thank you!

To the Medical Taskforce who has guided and supported us every step of the way, ensuring that we are doing all that we can to keep our community safe...we thank you!

To the Clergy and Jeff Baden (Magic Jeff... to our pre-schoolers) for reimagining Shabbat Sing and yet preserving its beauty... we thank you!

We are grateful to all who have joined us on this journey and helped make it possible.

We Can't Wait for Camp!

By Sarah Topal, Youth Community Director



Each bulletin is an opportunity for the Youth Department to highlight programs and individuals in our community. The past few months have proven to be challenging in exploring how to create and maintain relationships. The youth community is continuing to explore how to find meaningful connections, and we have invited kids of all ages to connect with the Youth Department (and others) in new ways.

The end of the school year may signify a summer of video games, sleeping in and visits to the beach, but for so many of our students, it also means summer camp!

After summer camps went virtual in 2020, this upcoming summer is giving campers the opportunity to go back to the places they love and spend the summer growing, learning and strengthening friendships. For the Youth Department, it provides us an opportunity to send them off to camp with hopes for a meaningful summer, and to reset for the upcoming year. We will spend time decorating

and setting up the incredible Youth Lounge to create a space for kids of all ages to join together. We will work on creating a calendar of events for all of our youth, working to meet their needs, interests and desires. While

our kids are off at camp creating unforgettable memories, the Youth Department will be working hard to create meaningful moments and experiences for when they return.



YOUTH SPOTLIGHT

While programming may look a little different these days, our youth and teens are still active in the community and staying involved in ways that are meaningful to them.

This bulletin, we're highlighting our **2020-2021**

BEANS USY Chapter President, NATHAN SPELLBERG

Nathan Spellberg has been a part of the Beth El Youth Department and the NSSBE community since he was a toddler. He has served on the Kadima and USY boards, most recently as BEANS Chapter President. He has continuously contributed to new program ideas, volunteers for social action and synagogue programs, and regularly attends shul serving as a role model for others in the Youth Department. He has been a camper at Ramah Darom for many years, traveling to Israel this upcoming summer on Ramah Seminar. Over the past few years, he has become more active in CHUSY Region of USY and has been elected the 2021-2022 CHUSY Regional President. We are so proud of Nathan and cannot wait to see where this next year takes him!

Know someone involved in the community? Let's celebrate them! Email Sarah at stopal@nssbethel.org with information.

Looking Ahead to the "New" Normal continued from page 2

We moved to Highland Park shortly before we started a family. Michelle (Josh), Pamela and Ross all grew up at Beth El. It was quite an honor to have Rabbi Kurtz, Rabbi Schwab and Rabbi Freedman help officiate at the bris of Lucas, our first grandchild two years ago.

Professionally I have been involved in various start-ups since graduating from college. All have been involved in technology disrupting traditional businesses. I am used to a fast pace and rapid change. Since 1999 I have focused on digital marketing technology and digital publishing. It is one of the reasons I enjoy Shabbat Services. It allows me to disconnect. Reflect. Learn. Recharge. See family and friends. The routines of generations are comforting and inspiring.

These past 16 months have been

a challenge, and that is simply an understatement. I would like to thank Ron Goldberg, our immediate Past President for his incredible leadership during this pandemic. Ron, we are so fortunate that you helped us navigate issue after issue.

While the pandemic created unprecedented challenges, our community embraced the changes that allowed us to continue to learn together, pray together and help each other. I could not be prouder of our execution and our community.

We are beginning to migrate back to a 'new' normal. A normal that is unfolding every day. I am confident our clergy, professional staff, medical task force, lay leadership and our community will work hard to make the best and safest decisions.

For over 73 years we have been blessed with incredible leadership at all levels. Over the next two years the Board and I will work to help Beth El continue a path to being a caring home for our members. Where we share in the joy of positive lifecycle events and help in times of need. A place of learning and inspirational services with the Conservative traditions we expect. And the modern and welcoming touches that make Beth El special to all.

If we have not met, I look forward to personally meeting you. If we have met, I look forward to seeing you again soon. Finally, please know that your input and feedback is always welcome at president@nssbethel.org.

Have a great summer,
Stuart Hochwert



Thank You, and *L'Hitraot* – Goodbye for Now

By Alicia Gejman Director of Formal Education

This will be my last bulletin article as the Director of Formal Education, as I will be leaving Beth El at the end of June.

It has been my great honor and privilege to work in a synagogue where the professional staff and the lay leaders work hand in hand to create a solid Jewish foundation for themselves and for generations to come.

Each year, for the past ten years, we set forth goals and have made great strides. Although I did not have the time to finish everything I set out to accomplish, I am consoled by the teachings of Pirke Avot 2:16 *Lo Alecha HaM'lacha Ligmor, VeLo Atah Ben Chorin LeHibatel Mimena*. "It's not your job to finish the work, yet you are not free to disregard it either." The first part of the quote helps me calm my fear, and the second part helps me reflect on what was accomplished.

I had the joy of working with many families, students, teachers, and the Beth El professional staff to create a seamless passage from one Beth El school to the next.

Our schools changed and evolved with the times, but we were always able to maintain a high standard of learning and commitment while including all children in the process. We re-imagined our program allowing for flexibility and quality of learning. We worked hand in hand with the Steinberg Pre-School staff to continue the work they do in bringing families closer to the synagogue.

Thanks to the families' dedication, our students participated in the International Competition of My Family Story sponsored by Beit Hatfutsot. Seven times in the last ten years, our students were winners in the competition and were recipients of the prize – a ticket to Israel. Students' participation in *chugim*, after-school activities became one of the highlights of our program. Family participation in family services grew exponentially in the last few years, adding to the vitality of our program.



We joined forces with other Conservative synagogues in the area to offer a combined Hebrew High School. I hope that my work has given families the foundation and the enthusiasm to continue learning and living meaningful Jewish lives.

I am cherishing all the precious moments I spent at Beth El. Each child, each family, each staff member is very special and has taught me something new. There is no better reward in life than that!

I would like to take this opportunity to say thank you to all the people who have worked alongside me. With special thanks:

To Rabbi Kurtz, Rabbi Schwab, Rabbi Freedman, Hazzan Tisser, and Hazzan Barnett for their guidance and support. To the entire Beth El professional staff. A special thanks to the VPs of Education who I had the pleasure to work with throughout my tenure at Beth El – Gail Scully, Tracey Hendler, Kim Ephraim, Jenna Smiley, and Erica Lindon. To the Synagogue Board for their dedication and help. To the parents for sharing your most precious possessions with us – your children; they are collectively and individually a source of pride and joy to our congregation and to the Jewish people. To the children for showing their innocence, and curiosity in everything they do. To the most professional educational team and school personnel for their boundless energy and creativity. You are the reason the Beth El schools are as strong as they are.

Finally, to my husband Pablo, our beloved children Ron and Maya, and our children-in-law Shira and Zax, for allowing me to do what I love.

MAZAL TOV TO OUR GRADUATES!

JACK & MILDRED COHEN
RELIGIOUS SCHOOL

Mazal Tov to the 7th-grade students for completing seven years of study. These students are eligible to apply to the Miriam and Bernard H. Sokol Hebrew High School.

Benjamin Berkowitz
Jack Gordon
Trevor Gross
Gabriel Leon
Maxwell Leon
Mia Pearl
Mitchell Posner
Sophie Ripes
Lauren Smiley
Max Viner
Emma Weininger
Ben Wirth

ROCHELLE ZELL JEWISH
HIGH SCHOOL SENIORS

Sarah Erlichman
Rachel Hochberg
Maya Resnick
Levi Magill
Carly Winick
Ori Stone

SOLOMON SCHECHTER
DAY SCHOOL
8th-grade Graduates

Ari Schwab
Joseph Silvers

MIRIAM AND BERNARD H. SOKOL
HEBREW HIGH SCHOOL

Eli Gidron
Stephanie Kallish



All Jews share the story of Ruth, fore-mother of King David. At Beth El, we share another very special Ruth. In conjunction with Central Great Lakes



Region's 2021 Spring Conference, our Sisterhood was proud to honor Ruth Fischer as our 2020-21 Valued Volunteer. You may know Ruth as the always-smiling face at pre-pandemic Shabbat services and kiddush, but do know her personal history?



Ruth was born in Bonn, Germany, and enjoyed an idyllic childhood until 11/9/38 (Kristallnacht), when her father (who was president of their synagogue) was taken to the shul, given a can of gasoline and ordered to set the building on fire. When he refused, he was arrested



and almost immediately transported to Dachau. Within two weeks, Ruth's mother put her (at age 7) and her five-

year-old sister on a train and, eventually, the girls were sent to live with a non-Jewish English family in Cambridge, who provided Ruth with a rabbi as tutor so she could learn about her heritage. The family lived in a 45-room house, with two nannies and a butler. It was expected that everyone dressed for dinner each night and Ruth was given, each Christmas, a bespoke dress to match the holiday dress that would be worn by Princess Elizabeth.

Sneezing was forbidden as impolite and family members would stand at attention as the King gave his annual Christmas radio speech. Ruth's every wish, including getting her a glass of water when she was thirsty, was fulfilled by the family's butler.

Ruth was sent to a private, all-girls school and then to a local all-girls medical school. After her father was released from Dachau and her parents were reunited, they were unable to properly care for her, so Ruth continued to live with the family in Cambridge. After seven years apart, Ruth was finally able to gather with her family for Pesach



in 1945.

In 1949, Ruth (with her sister and parents) arrived in Chicago. At age 18, Ruth married a 28-year-old Jewish doctor and they had two sons and a daughter. Ruth lost her physician husband after 32 years of marriage and she later wed Bruno, with whom she joined NSSBE in 1985.

In addition to many important positions held by Ruth on the regional level of Women's League, Ruth has been a co-president of our own Sisterhood during five (yes, FIVE!) administrations and has served as long-time chair of our annual Dinner with the Rabbi. For the past many years, she has been our dedicated Corresponding Secretary and her generously-shared artistic skills make her our go-to creator of table centerpieces for all occasions.

Honoring A Woman of Valor, Diane Levin

By Pam Schlosberg and Sulie Holt



Today, we are dedicating our Gift Shop column to our beloved Diane Levin, who passed away just after the last Kol Beth El was published. We wanted to honor her memory and share a bit about her with you, our Beth El family. Diane was an extraordinarily beautiful soul and a true Woman of Valor. She brought an amazing

dedication and love to all that she did for our Beth El Community from co-chairing several of our Beth El Art Festivals and serving on our Sisterhood's Board of

Directors to stewarding the gift shop for which she served as co-chair for nearly ten years.

Diane spent countless hours at the gift shop where she truly enjoyed working. Whether we were stocking shelves, reviewing inventory, or planning for the next holiday, she made it fun. She always had a ready smile, and when she smiled at you, it was so very warm and genuine.

Even on the days she wasn't feeling her best, Diane worked tirelessly to make sure everything was right, down to the smallest detail. The gift shop reflects Diane's love and keen eye for beautiful pieces of art. She was committed to ensuring that what we provided perfectly reflected the

concept of Hiddur Mitzvah — beautiful Judaica to enhance the celebrations of holidays or other special occasions.

For her tireless efforts, she was honored by Sisterhood as a Valued Volunteer, and she definitely was! In her unassuming way, Diane brightened the world with her thoughtfulness, kindness, and sensitivity to the needs of others. Diane was truly a woman of valor, strength, and integrity who embraced life — a truly beautiful soul whom we will miss always.

May Diane Levin be bound in the bond of eternal life and may her memory be for a blessing.

New Members and New Membership Chair

By Judy Berkeley, Membership & Development Director

We welcome the following new members to Beth El:

Cary & Laurence Benjamin
Linda Clark
Carly & Jefford Humes and their children Micah (11) and Eliana (9)
Lauren Niimi & Andrew Mitzenmacher
Marci Dickman & Ralph Schwartz

We also welcome our 60 new Paul S. and Sylvia Steinberg Pre-School Families as new Beth El members, because for the first year ever our SPS families get to enjoy all aspects of Beth El membership!

Also, after two wonderful years of Stacy Goldsmith serving as VP of Member-

ship, we have now transitioned to our new VP, Dana Atlas. Dana comes to us with so much enthusiasm for her new role and new ideas to go with it, and we are so excited to have her on board. Here's some background about Dana, her family and history with Beth El in her own words:

"We have been members of NSS Beth El since 2011, when our daughter was three and entered the Steinberg Pre-School. My son also went to the Steinberg Preschool and both are now in the CRS program. I have been on the Board of Directors for around five years. I've also served as a Co- Chair to the CRS committee and as a member of the Board of Education. Jenna and I

were Co- Founders of the Challah Bake program which I'm very proud of.

I grew up in Deerfield, went to The Ohio State University - moved back to Deerfield when Blake was three. My roots are here and I love the community. I would only move for warmer weather if my parents moved! lol. We have a 10-month-old Weimador puppy named Bleu who runs our world right now. In my free time I like to read, play tennis, cook/bake and run. I'm excited to be part of the membership team and hope we can grow what you guys have already started."

Welcome to Membership, Dana!

Ali Drumm Will Become Director of Congregational Learning

NSSBE is excited to announce that on July 1st, Ali Drumm will assume the new position of Director of Congregational Learning. Ali's leadership roles and experiences over the past 18 years at Beth El have added much value to our community.

We are confident this new role will be the right step for the congregation's newly restructured Education Department (details below). In her daily work Ali demonstrates passion, creativity, vision, strategic thinking, and motivation. She is enthusiastic about working with others and enabling them to succeed in their roles.

Dr. Alicia Gejman's imminent retirement from her position as Director of Formal Education set in motion the implementation of a new educational structure passed by the Board of Education, Executive Committee, and Board of Directors. This new model is designed to enhance inclusivity, community, and engagement between our formal and informal education departments. Also included was the call to create and hire a new position - the Director of Congregational Learning - to replace the separate positions of Director of Formal Education



and Director of Informal Education.

This position will be responsible for the administration and oversight of the NSSBE Education Department.

Collaborating with the rabbis, staff and lay leadership, the Director of Congregational Learning will help to develop and implement the educational mission and vision of our Synagogue in all of its educational branches

together with their directors: The Gray Cultural and Learning Center, Youth Community, Young Family Programming Committee, Cohen Religious School, Steinberg Pre-School, and the Lederman Family Continuing Education Department. Together they will set the educational vision for the congregation from preschool through adult education.

Please join us in welcoming Ali as our new Director of Congregational Learning!

Here is a note from Ali:

With incredible gratitude and a deep love for this community, I look forward to serving as the Director of Congregational Learning. Learning is an active joy that we take for ourselves and transmit Jewish knowledge from generation to generation. Our talented teachers guide our steps and the warm community supports us on our journey. We are the inheritors of a thoughtful and aspirational tradition, and we learn for its own sake so that we can bring this wisdom to bear on our modern life. Our community has always been dedicated to education, and this heritage will guide us into our bright future.



HAZAK Caring Community Cares for Members in Many Ways

By Jackie Melinger, Co-Chair HAZAK Committee

We continue to provide Circle of Life Shabbat Dinners for congregants due to generous HAZAK Fund donations.



As of May 21, we have provided 251 meals to our members. We are so appreciative to all the generous donors!

We have delivered 18 colorful butterflies to members who reside in local Senior Living Centers.

Please consider a \$36 donation to brighten a senior's life. For more information, go to <https://nssbe.shulcloud.com/form/hazak-butterfly-kisses.html>.

Fortunately, many members are fully vaccinated and have resumed their grocery shopping and errands. We continue to provide friendship. Our

volunteers have developed wonderful relationships and will continue the calls and check-ins.

Our next step is to find ways to bring people back together through programming. To that end, we are happy to announce that a subcommittee has been formed to brainstorm ideas and programs to offer older adults in partnership with the CLC, the Writer's Beit Midrash and HAZAK. Betsy Katz, Fran Alpert, Madeleine Solomon and Rachel Kamin will spearhead this effort. Various topics are under discussion and will most likely begin in the fall. Watch your emails for further details.

Although we seem to be through the worst of the Pandemic, we are aware there are still people in our community

who are struggling. In response to those needs, HAZAK is now accepting Jewel and Target gift card donations to support those who may need help with groceries, paying for medications or basic essentials. If you know someone who needs our assistance, or you want to get involved in HAZAK, please contact Jackie Melinger - jackiemelinger@gmail.com or Mary Ellen Bowers - eyerishmar@comcast.net.

If there is a need, the HAZAK Caring Community will work to help out!

Wishing you continued health and happiness!

Jackie and Mary Ellen

Environmental Corner April 2021

By Richard Schlosberg

Per Mort Steinberg's "Tradition by the Lake", our campus is centered around the former Price mansion built in 1911. The school wing was completed in 1954. So 110 years or 67 years...and we want to make the campus much more green!

If Robert Crawley, the Earl of Grantham (Downton Abbey) was reading this, his comment would likely be "Golly" which in British lexicon means surprised or more likely "are you kidding?" Well, we ARE taking a run at going more green and good things ARE happening.

The following climate change headlines were in the April 21, 2021 Tribune and NY Times:

1. 'If you want a scary story'...
2. "Changing climate will force adaptation in world of nature"
3. "Biden Will Pledge to Cut Planet Warming Emissions Nearly in Half by 2030"
4. "Climate Change Adviser Gets Another Chance to Tackle Global Warming"

What it can look like: In 2020 Phoenix, AZ set many temperature records. Included are:

145 days above 100F, 53 days at or above 110F and 14 days at or above 115F. Lord Grantham might only be able to say "Golly!"

It is thus time to actually do something about climate change. Below we summarize some of what Beth El is doing both with respect to the campus buildings and what is being done via our Circle of Life operations. Please capture what you can for your activities at home and at the office.

- We replaced all lighting with energy efficient LED fixtures and bulbs in
- The Jack and Mildred Cohen Religious School and Paul S. & Sylvia Steinberg Pre-School classrooms and offices
 - The Horwitz-Hoffman Youth Lounge and the Grossinger-Brickman Activity Room
 - The Joseph and Mae Gray CLC
 - All Beth El offices
 - All hallways throughout the building,



- including the rooms in the basement
- The Paset and Field Family Sanctuary
 - All parking lot lighting and lighting under the overhangs

All recent construction including the new Zell South Wing, the Rotunda, Blumberg Social Hall and the Sager Beit Midrash, and all restrooms have been equipped with energy savings features as well as LED lighting and are on a computerized monitoring system that shuts down when not in use.

On our HVAC system, we replaced most of the steam traps with more efficient units, and replaced the steam converters with modern, energy-efficient units. We also made all necessary piping repairs, to reduce water requirements.

MAZEL TOV TO:

Leah Brajer on the occasion of her 45th birthday

Gail and Andrew Brown on the birth of their granddaughter, Bluma Aviva

Eileen and Dr. Paul Goldstein on the birth

of their grandson, Brody Zev Ross

Larry Pachter on the occasion of his special birthday

Lindsey and David Ross on the birth of their son, Brody Zev Ross

Fran and Jonathan Sherman on the engagement of their son, Paul, to Kerry Honan

Mira and Darryl Temkin on the occasion of their 45th wedding anniversary

CONDOLENCES TO:

Arielle, Alexandra, and Noa Dayan on the loss of their grandfather, Gerald B. Chattman

Elise Dayan on the loss of her father, Gerald B. Chattman

Hannah Froy and Rachel (Tyler) Lacy on the loss of their grandmother, Myrna Schwartz

Lynn (Michael) Froy on the loss of her mother, Myrna Schwartz

Jason and Alex Garfinkel on the loss of their grandmother, Rose Chrustowski

Judy Chrustowski-Garfinkel (Douglas Garfinkel) on the loss of her mother, Rose Chrustowski

Janice (Steve) Hefter on the loss of her father, Sam Folkman

Shira and Justin (Lauren) Hefter on the loss of their grandfather, Sam Folkman

Dr. Jamie (Irene) Jacobsohn on the loss of his father, Gert Jacobsohn

Rachel and Elana Jacobsohn on the loss of their grandfather, Gert Jacobsohn

Joyce Kamen (Ben Abraham) on the loss of her sister, Cyrena "Dolly" Moline

Karen (Michael) Kesner on the loss of her sister-in-law, Abbie C. Weisberg

Debbie (Barry) Kravitz on the loss of her mother, Rose Bolshon

Melissa (Ashley) Kravitz and Jordan Kravitz on the loss of their grandmother, Rose Bolshon

Ruth Kupchick on the loss of her sister, Ursula Moses

Amy Levin and Allison Levin (Max Affrunti) on the loss of their mother, Diane Levin

Betty Ann Levin on the loss of her daughter-in-law, Diane Levin

Michael Levin (Gigi Cohen) on the loss of his sister-in-law, Diane Levin

Stephen Levin on the loss of his wife, Diane Levin

David (Bonnie) Massarik and Sara Massarik on the loss of their father, Dr. Ronald Massarik

Marline Massarik on the loss of her husband, Dr. Ronald Massarik

Adam Miller (Michelle Gooze-Miller) on the loss of his mother, Elaine Miller

Jonah, Sylvia, Asher and Rose Miller on the loss of their grandmother, Elaine Miller

Roth Family on the loss of their father and grandfather, Walter S. Roth

Phyllis (Michael) Sadoff on the loss of her sister, Lynne Favus Neft

Michael (Barbara) Salberg on the loss of his father, Lee Salberg

Dale (Debby) Strauss on the loss of his father, Dr. Sherwin L. Strauss

KIDDUSH SPONSORS:

Michelle and Jack Hirschfield
Michelle and Jeff Leon
Paulette and Edward Margulies

Susan and Marc Nathan
Danielle and Jonathan Pearl

IN MEMORIAM:

Diane Levin
Dr. Ronald Massarik
Walter S. Roth
Myrna Schwartz

Environmental Corner continued

Since April we are participating in ComEd's Energy Savings Program, where we are paired with a third party contractor from Bauman Consulting, who is certified by ComEd to assess our entire facility order to help us reduce our overall energy consumption.

Circle of Life Catering (COL) has already taken some impressive steps, a number of which are readily transferred to activities in our homes. Laura Frankel, our chef, is passionate about making her operation as green as possible. Two important reference sites in this area are: The Green Restaurant Association (GRA) and the Green Business Network.

Best practices covers some 20 items, some 'low hanging fruit', others more costly. For example, when possible, Laura sources organic food that is locally grown and seeks the flexibility to do more. She has reduced food packaging

and provides food product containers using recycled and recyclable materials. COL uses seafood listed in The Seafood Watch consumer guide, which provides consumers with an easy way to check for sustainable seafood choices (see ©Monterey BayAquarium). Operations are GMO free. Where possible, COL uses healthier foods such as olive oil instead of soy. At home it is recommended that food waste is reduced by reducing portion size.

Where appropriate COL uses a linen service qualified as water saving. For the hightop tables Beth El now employs, we do the linen cleaning in house to save. We have gone as paperless as possible and recycle as much as possible. Laura uses unbleached paper products (napkins, parchment paper, towels and has replaced foam products with starch based.

Composting is a project Laura would like to

implement. Working with our schools, we could generate a Children's Garden from our composting product. Reach out to Laura to discuss other ideas she has.

It is recommended that Energy Star Qualified appliances will replace current appliances as finances allow.

Overall, NSSBE is attuned to the demands that climate change demands....we ALL need to do what we can given the realities of each situation. Even on an aging campus you see that there are many opportunities to make a difference.

Just as Israel has worked tirelessly to managing and grow their water supplies, we too ALL NEED TO PULL TOGETHER to do our best to minimize climate change outcomes for today and tomorrow's generations.

Rabbi Schwab Discretionary Fund

In honor of Benjamin Berkowitz becoming a bar mitzvah and with appreciation to Rabbi Schwab
- **Pere Berkowitz and Yael Mirelman**

In honor of Eli Decker and Madeline Decker's b'nai mitzvah - **Adriane Bernstein**

In honor of Jerome and Mary Kaltman's anniversary

- **Michael Gurtman and Lois Lourie**

- **Richard Zelin and Judith Hirsch-Zelin**

In honor of Julie and Mark Gerstein's 35th wedding anniversary - **Stuart and Barbara Hochwert**

In honor of Liana Schwab, daughter of Erica and Rabbi Michael Schwab, on becoming a bat mitzvah

- **Benjamin Kopin and Beth Shapiro Kopin**

- **Gary and Debbie Lindon**

- **Jonathan and Francine Sherman**

In honor of Sara Ravich's birthday - **Carol Ravich**

In honor of the birth of our grandson, Charles Malcolm Warther, son of our daughter Hannah and her husband Nicholas - **Steven and Susan Kessler**

In honor of the birth of our grandson, Dean Micah Gibbs, son of Ashley and Josh Gibbs and the birth of our granddaughter Maya Goldie Cahan, daughter of Brittany and Josh Cahan - **Laurel and Barry Abramowicz**

In memory of Diane Levin, beloved wife and mother and with appreciation to Rabbi Schwab
- **Stephen Levin and Family**

In memory of Diane Levin, beloved wife of Stephen Levin, beloved mother of Amy Levin and Allison (Max Affrunti) Levin, beloved sister of Sharon Finegood, beloved daughter-in-law of Betty Ann Levin and beloved sister-in-law of Michael Levin, Sharon Wein and Lawrence Levin

- **Chana Anderson**

- **Elizabeth and David Copeland**

- **Steve and Linda Feinstein**

- **Stuart and Barbara Hochwert**

- **Earl and Rochelle Rubinoff**

In memory of Dr. Sherwin L. Strauss, beloved husband of Ellen Strauss; beloved father of Dale Strauss, Roy Strauss, Lee "Lavey" Strauss, Jay Strauss and Debbie z"l Strauss; beloved brother of Gloria Goldberg and Jerome Strauss; beloved grandfather and great-grandfather - **Stuart and Marianne Taussig**

In memory of Elaine Miller, beloved mother of Adam (Michelle Gooze) Miller and beloved grandmother - **Anton and Tracey Hendler**

In memory of Harvey Lerner, beloved brother and with appreciation to Rabbi Schwab for his kindness and support for our family in our time of need
- **Jay and Karyn Lerner**

In memory of Irving Kushner, beloved father
- **Susan and Mark Pollack**

In memory of Joan Epstein, beloved mother
- **Mary and Jerome Kaltman**

In memory of Joan Groner, beloved mother of Judy Groner and Jonathan Groner and beloved grandmother - **Rachell Eisenberg**

In memory of Judy Shulman, beloved sister of Barbara Hoffman and beloved aunt of Brian Hoffman, Lisa Fishbein and Allen Shulman - **Stuart and Barbara Hochwert**

In memory of Karen Gerrard

- **Ruth and Mal Kaufman**

In memory of Lynne Neft, beloved sister and with appreciation to Rabbi Schwab
- **Michael and Phyllis Sadoff**

In memory of Marvin Bernstein, beloved husband - **Adriane Bernstein**

In memory of Max Smiley, beloved father

- **Stephen and Judy Smiley**

In memory of Myrna Schwartz, beloved mother, grandmother and great-grandmother, and with appreciation to Rabbi Schwab - **Lynn and Michael Froy**

In memory of Myrna Schwartz, beloved mother of Lynn (Michael) Froy and Jeffrey (Kathleen) Schwartz, beloved grandmother and great-grandmother

- **Allene Frost**

- **Elise and Ira Frost**

In memory of Nathan Talman, beloved grandfather - **Marc and Jacalyn Birnbaum**

In memory of Norma Meisner, beloved aunt
- **Richard and Karen Reisin**

In memory of Reuven Pinsler, beloved husband of Adrienne Pinsler, beloved father of Jacklin Levine and Igal Pinsler and beloved grandfather
- **Stuart and Barbara Hochwert**

In memory of Rose Bolshon, beloved mother and with appreciation to Rabbi Schwab - **Debra and Barry Kravitz**

In memory of Rose Eckerling, beloved mother-in-law - **Adrienne Eckerling**

In memory of Rose Sher, beloved great-grandmother - **Michael and Sara Sher**

In memory of Ruth Belzer - **Ilana Cohen**

In memory of Sam Folkman, beloved father, and with appreciation to Rabbi Schwab - **The Hefter Family**

With appreciation to Rabbi Schwab as a thank you for his kindness in joining my family to wish me a happy 90th birthday - **Sally Aaron**

With appreciation

- **Gabriel and Deborah Aizenberg**

- **Daniel Berger**

- **Gerald and Annette Blumberg**

- **Ron and Eileen Goldberg**

- **Barry and Irene Sufrin**

Rabbi Freedman Discretionary Fund

In honor of Benjamin Berkowitz becoming a bar mitzvah and with appreciation to Rabbi Freedman
- **Pere Berkowitz and Yael Mirelman**

In honor of Rabbi Freedman and Judy Berkeley for leading a phenomenal and reflective Sulam course - **Marla and Terry Grossberg**

In honor of the birth of our grandson, Dean Micah Gibbs, son of Ashley and Josh Gibbs and the birth of our granddaughter Maya Goldie Cahan, daughter of Brittany and Josh Cahan - **Laurel and Barry Abramowicz**

In memory of Annette W. Seidenberg, beloved wife - **Mel Seidenberg**

In memory of Cyrena "Dolly" Moline, beloved sister of Joyce Kamen, beloved mother, beloved grandmother and great-grandmother

- **Fran and Joel Rabinowitz**

- **Merle and Sheldon Rosenfeld**

In memory of Jordan Wainstein, beloved cousin - **Philip and Doreen Feitelberg**

In memory of Michael Wainstein, beloved cousin - **Philip and Doreen Feitelberg**

In memory of Rose Bolshon, beloved mother and with appreciation to Rabbi Freedman
- **Debra and Barry Kravitz**

In memory of Rose Bolshon, beloved mother of Debra Kravitz, Donna Bolshon and Barbara Bolshon, beloved grandmother and great-grandmother
- **Robert and Laurie Levin**

In memory of Walter S. Roth and with appreciation to Rabbi Freedman - **The Family of Walter Roth**

With appreciation to Rabbi Freedman for leading the Sulam for Purposeful Living class - **Michael Gurtman and Lois Lourie**

Hazzan Tisser Discretionary Fund

In honor of Benjamin Berkowitz becoming a bar mitzvah and with appreciation to Hazzan Tisser - **Pere Berkowitz and Yael Mirelman**

In memory of Rose Bolshon, beloved mother and with appreciation to Hazzan Tisser
- **Debra and Barry Kravitz**

With appreciation for the Shabbat Shira sermon - **Julie Isaacson**

With appreciation to Hazzan Tisser for making an El Molay on the 23rd yearzeit of my beloved wife, Annette Seidenberg - **Mel Seidenberg**

Rabbi Kurtz Discretionary Fund

In honor of Mayer Stiebel and Cara Medansky-Stiebel
- **Joseph and Susan Ament**

In honor of Rabbi Kurtz's 70th birthday
- **Laurel and Barry Abramowicz**

In honor of Rabbi Vernon and Bryna Kurtz
- **Joseph and Susan Ament**

In honor of the birth of our grandson, Dean Micah Gibbs, son of Ashley and Josh Gibbs and the birth of our granddaughter Maya Goldie Cahan, daughter of Brittany and Josh Cahan
- **Laurel and Barry Abramowicz**

In memory of Barbara Sporn, beloved sister
- **Gary and Debbie Lindon**

In memory of Benjamin Simon Applebaum, beloved son - **Stephen and Lily Applebaum**

In memory of Marianne Hoffman, beloved grandmother - **Gary and Debbie Lindon**

Andrew and Gail Brown Technology Endowment Fund

In honor of the birth of Gail and Andrew Brown's granddaughter, Bluma Aviva - **Noreen and David Ohcana**

Ann and Jack Weinberg Holocaust Memorial Education Endowment Fund

In honor of Larry Pachter on his birthday
- **Pearl and Joel Kagan**

In memory of Rose Chrustowski, beloved mother of Judy Chrustowski-Garfinkel and beloved grandmother of Jason and Alex - **Andrew and Gail Brown**

Arnold Rissman Family Kol Ami Museum Endowment Fund

In memory of Myrna Schwartz, beloved mother of Lynn (Michael) Froy and Jeffrey (Kathleen) Schwartz, beloved grandmother and great-grandmother

- Dodi and John Bailen
- Theodore and Cheryl Banks
- Andrew and Gail Brown
- JoAnne Davies
- Marla Hand and James Nyeste
- Jonathan and Leslie Kind
- Benjamin Kopin and Beth Shapiro Kopin
- Millie Weber

Capital Improvement Fund

In memory of Sylvia Glotzer Maiman, beloved mother and grandmother - **Linda and Steven Feinstein and Family**

With appreciation to Rabbi Schwab for remembering Sharon Balin and Maria Guidice Papa with kaddish prayers upon their passing - **Linda and Steven Feinstein and Family**

Edward S. Frank Israel Study Memorial Endowment Fund

In honor of my parents, Ed z"l and Nessia Frank for the care, love and opportunities they provided me though my lifetime - **Louis Frank**

In honor of Nessia Frank's 85th birthday, Happy birthday Ima - **Ben, Wendy, Leah, Shoshana and Dalya Frank**

In memory of Cyrena "Dolly" Moline, beloved sister of Joyce Kamen, beloved mother, beloved grandmother and great-grandmother

- Gerry Kaplan
- Ed and Paulette Margulies

In memory of Edward S. Frank, beloved husband of Nessia Frank - **Joel and Frances Rabinowitz**

Family Engagement Endowment Fund

In memory of Claire Bronson, beloved mother of Daniel Bronson and Michael Bronson, beloved grandmother and beloved great-grandmother - **Diane and Loren Weil**

Gertrude Lederman Family Continuing Education Fund

In memory of Dr. Sherwin L. Strauss, beloved husband of Ellen Strauss; beloved father of Dale Strauss, Roy Strauss, Lee "Lavey" Strauss, Jay Strauss and Debbie z"l Strauss; beloved brother of Gloria Goldberg and Jerome Strauss; beloved grandfather and great-grandfather - **Michael and Susan Millenson**

In memory of Gert Jacobsohn - **Brad and Marcie Pickard**

Glass Family Music Endowment Fund

In honor of the birth of Dr. Jeff and Beth Kopin's grandchild - **Philip and Ellen Glass**

In honor of the birth of Myra Kopin's great-grandchild - **Philip and Ellen Glass**

HAZAK - Butterfly Kisses Campaign Fund

With appreciation

- Mary Ellen Bowers
- Stuart and Barbara Hochwert
- Zachary and Erica Lindon
- Trevor and Dina Lisssoos
- Matthew Pestine and Jamie Glass-Pestine
- Bobbie and Len Tenner

HAZAK Fund

In honor of Honey Bronson and all the help she has given me - **Arlene Benjamin**

In honor of Larry Pachter's special birthday - **Leah and Jori Brajer**

In honor of Mira and Darryl Temkin's 45th wedding anniversary and for all the caring they give - **Cara Medansky-Stiebel and Mayer Stiebel**

In honor of Rita Echt - **Andrew Echt**

In memory of Cyrena "Dolly" Moline, beloved sister of Joyce Kamen, beloved mother, beloved grandmother and great-grandmother - **Larry Goldsmith and Mary Ellen Bowers**

In memory of David Grossberg, beloved father - **Marla and Terry Grossberg**

In memory of Diane Levin, beloved wife of Stephen Levin, beloved mother of Amy Levin and Allison (Max Affrunti) Levin, beloved sister of Sharon Finegood, beloved daughter-in-law of Betty Ann Levin and beloved sister-in-law of Michael Levin, Sharon Wein and Lawrence Levin - **Sandy Starkman and Larry Pachter**

In memory of Dr. Stanley Malashock, beloved father of Beth Leeds, Neal Malashock, Larry Malashock and Kathy A. - **Gerald and Annette Blumberg**

In memory of Gene Levin, beloved brother and his close friend Phil Zand - **Kenneth and Marcy Levin**

In memory of Gerald B. Chattman, beloved father of Elise Dayan and beloved grandfather of Arielle, Alexandria and Noa Dayan

- Gerald and Annette Blumberg
- Todd and Lisa Fishbein

In memory of Judy Shulman, beloved sister of Barbara Hoffman and beloved aunt of Brian Hoffman and Lisa Fishbein - **Larry Goldsmith and Mary Ellen Bowers**

In memory of Muriel Kasanov, beloved sister of Lawrence Block, beloved mother, grandmother, great-grandmother and aunt - **Gerald and Annette Blumberg**

In memory of Rose Bolshon, beloved mother of Debra Kravitz, Donna Bolshon and Barbara Bolshon, beloved grandmother and great-grandmother

- Gerald and Annette Blumberg
- Sara and Steve Coven

In memory of Rose Chrustowski, beloved mother of Judy Chrustowski-Garfinkel and beloved grandmother of Jason and Alex

- **Jackie and Michael Melinger**

In memory of Sally Levin Lerner, beloved mother - **Kenneth and Marcy Levin**

In memory of Sidney L. Starkman, Mildred Lashinsky Starkman, Annette Berg and Richard Berg at Yizkor - **Sandy Starkman and Larry Pachter**

In memory of Zelda Moog - **Debby and Ron Hahamy**

Wishing a complete and speedy recovery to Frankie Zand - **Brian and Jan Channon**

With appreciation to Hazak

- Anonymous
- Sheldon and Raye Isenberg
- Louis and Barbara Kahn
- Cara Medansky-Stiebel and Mayer Stiebel
- Frances Lee Zand

With appreciation to Hazak and Circle of Life for the Shabbat dinner - **Jodi Eisenstadt**

With appreciation to Hazak for all they do and recognizing my birthday - **Millie Weber**

Horwitz-Hoffman Youth Endowment Fund

In memory of Judy Shulman, beloved sister of Barbara Hoffman and beloved aunt of Brian Hoffman and Lisa Fishbein

- Gerry Kaplan
- Frances and Joel Rabinowitz

Jack and Mildred Cohen Religious School Fund

In honor of Trevor Gross, son of Dan and Lori Gross, on becoming a bar mitzvah - **Peggy and Mel Alexander**

In memory of Cyrena "Dolly" Moline, beloved sister of Joyce Kamen, beloved mother, beloved grandmother and great-grandmother - **Howard Turner**

In memory of Diane Levin, beloved wife of Stephen Levin, beloved mother of Amy Levin and Allison (Max Affrunti) Levin, beloved sister of Sharon Finegood, beloved daughter-in-law of Betty Ann Levin and beloved sister-in-law of Michael Levin, Sharon Wein and Lawrence Levin - **Howard Turner**

In memory of Esther Pessis, beloved mother - **Dr. Dennis and Amy Pessis**

In memory of Jack M. Hirschfield, beloved brother - **David and Pamela Hirschfield**

In memory of Neil Levinson, beloved brother - **David and Pamela Hirschfield**

Joseph and Mae Gray Cultural and Learning Center Fund

In honor of the Kravitz Shiva - **Lilach and Carl Schrag**

In memory of Diane Levin, beloved wife of Stephen Levin, beloved mother of Amy Levin and Allison (Max Affrunti) Levin, beloved sister of Sharon Finegood, beloved daughter-in-law of Betty Ann Levin and beloved sister-in-law of Michael Levin,

Sharon Wein and Lawrence Levin - **Gary Gordon and Marilyn Hirsch**

In memory of Ralph Ponfil, beloved father of Janet Resnick and Jody Berman, beloved companion of Anna Mirosz and beloved grandfather and great-grandfather - **Beth and Bob Footlik**

In memory of Reuven Pinsler, beloved husband of Adrienne Pinsler, beloved father of Jacklin Levine and Igal Pinsler and beloved grandfather - **Arielle and Victor Levitan**

In memory of Rose Bolshon, beloved mother of Debra Kravitz, Donna Bolshon and Barbara Bolshon, beloved grandmother and great-grandmother

- **Dr. Paul and Sharon Bilow**
- **Marla Hand and James Nyeste**
- **Sulie Holt**
- **Marcie and Brad Pickard**
- **Daniel and Ronit Ripes**
- **Pam and Richard Schlosberg**

Kopin Family Fund for Children's T'filot Education Endowment Fund

In memory of Robert Godzicki - **Myrna Kopin**

In memory of Sheldon Kopin, beloved husband of Dolly Kopin, beloved father of Benjamin Kopin, Jonathan Kopin and Sandra Strick and beloved grandfather - **Sandy Starkman and Larry Pachter**

LGBTQ+ Inclusion Fund

In memory of Rose Bolshon, beloved mother of Debra Kravitz, Donna Bolshon and Barbara Bolshon, beloved grandmother and great-grandmother - **Andrew and Gail Brown**

Maxwell Abbell Library Fund

In honor of Mira and Darryl Temkin's 45th wedding anniversary - **Sandy Starkman and Larry Pachter**

In memory of Cheryl Brand, beloved wife of Jeff Brand - **Robert and JoEllen Lidov**

In memory of Diane Levin, beloved wife of Stephen Levin, beloved mother of Amy Levin and Allison (Max Affrunti) Levin, beloved sister of Sharon Finegood, beloved daughter-in-law of Betty Ann Levin and beloved sister-in-law of Michael Levin, Sharon Wein and Lawrence Levin - **Robert and JoEllen Lidov**

In memory of Dr. Sherwin L. Strauss, beloved husband of Ellen Strauss; beloved father of Dale Strauss, Roy Strauss, Lee "Lavey" Strauss, Jay Strauss and Debbie z"l Strauss; beloved brother of Gloria Goldberg and Jerome Strauss; beloved grandfather and great-grandfather - **David and Brenda Jackson**

In memory of Jonathan Shulman - **Robert and JoEllen Lidov**

In memory of Muriel Kasanov, beloved sister of Lawrence Block, beloved mother, grandmother, great-grandmother and aunt - **Frances and Joel Rabinowitz**

In memory of Myrna Schwartz, beloved mother of Lynn (Michael) Froy and Jeffrey (Kathleen) Schwartz, beloved grandmother and great-grandmother - **Pam and Richard Schlosberg**

In memory of Rose Bolshon, beloved mother of Debra Kravitz, Donna Bolshon and Barbara Bolshon, beloved grandmother and great-grandmother

- **Jacklin and Jay Levine**
- **Pam and Richard Schlosberg**

In memory of Ruth Belzer

- **Frances and Joel Rabinowitz**

With appreciation to Rachel Kamin for her help with a book discussion program at Temple Har Zion - **Carol Flank**

Minyan Service Fund

In honor of Judy and David Weiss and Sandy Starkman and Larry Pachter, Chag Purim Sameach - **Susan and Joe Ament**

In memory of Cathy Feinstein Molever, beloved sister - **Linda and Steven Feinstein and Family**

In memory of Dorothy Magad, beloved mother - **Irwin and Linda Magad**

In memory of Esther Serman, beloved mother - **Toby Schwartz**

In memory of Gail Kalish, beloved wife of Buddy Kalish, beloved mother of Susan Karlinsky, Howard Kalish and Ron Kalish, beloved grandmother and great-grandmother and cherished friend - **Stanton and Carole Dardiger**

In memory of Harry Magad, beloved father - **Irwin and Linda Magad**

In memory of Helen Leeds, beloved mother - **Steven and Beth Leeds**

In memory of Janet Weisberg, beloved mother - **Andrea Weisberg**

In memory of Judith Weiner, beloved wife of Larry Weiner - **Sharon and Harris Goldenberg**

In memory of Judy Shulman, beloved sister of Barbara Hoffman and beloved aunt of Brian Hoffman and Lisa Fishbein - **Gabriel and Deborah Aizenberg**

In memory of Martin Maiman, beloved father and grandfather - **Linda and Steven Feinstein and Family**

In memory of Milton Leeds, beloved father - **Steven and Beth Leeds**

In memory of Nettie Zerkowitz, beloved grandmother - **Marla and Terry Grossberg**

In memory of Phil Zerkowitz, beloved grandfather - **Marla and Terry Grossberg**

In memory of Reva Duman, beloved mother - **Sherwin and Marlene Konik**

In memory of Sarah Ehrlich, beloved mother - **Pearl Zaid**

With appreciation to Allan Spellberg and Audra Kaplan

Miriam and Bernard H. Sokol Hebrew High School Endowment Fund

In memory of Miriam and Bernard H. Sokol, beloved mother and father - **Ronnie Jo Sokol**

Miriam and Bernard H. Sokol Hebrew High School Fund

In honor of Hazzan Barbara Barnett for leading a community 2nd night Seder and for teaching us about the siddur and tropes - **Ronnie Jo Sokol**

In memory of Cyrena "Dolly" Moline, beloved sister of Joyce Kamen, beloved mother, beloved grandmother and great-grandmother - **Ronnie Jo Sokol**

In memory of Miriam and Bernard H. Sokol, beloved mother and father - **Ronnie Jo Sokol**

Music Fund

In honor of the birth of Gail and Andrew Brown's granddaughter, Bluma Aviva - **Abby and Lawrence Block**

In honor of the birth of Robert and Laurie Levin's grandchild, Asher Lev - **Abby and Lawrence Block**

In memory of Cyrena "Dolly" Moline, beloved mother of Mindy Botbol - **Abby and Lawrence Block**

In memory of Cyrena "Dolly" Moline, beloved sister of Joyce Kamen, beloved mother, beloved grandmother and great-grandmother - **Abby and Lawrence Block**

In memory of Diane Levin, beloved wife of Stephen Levin, beloved mother of Amy Levin and Allison (Max Affrunti) Levin, beloved sister of Sharon Finegood, beloved daughter-in-law of Betty Ann Levin and beloved sister-in-law of Michael Levin, Sharon Wein and Lawrence Levin - **Abby and Lawrence Block**

In memory of Dr. Donald Aaronson, beloved brother of Dr. Neil Aaronson - **Abby and Lawrence Block**

In memory of Muriel Kasanov, beloved sister of Lawrence Block, beloved mother, grandmother, great-grandmother and aunt - **Gerry Kaplan**

NSS Beth El Special Gifts Fund

In honor of Jerome and Mary Kaltman's anniversary - **Carrol Gottfried**

In honor of Larry Pachter's special birthday - **Richard Zelin and Judith Hirsch-Zelin**

In honor of Roni Weiss - **Ellen Rissman**

In honor of the birth of baby Asher, grandchild of Robert and Laurie Levin - **Phillip Markowitz**

In memory of Al Leiderman, beloved father - **Michael and Hermine Lederman**

In memory of Cyrena "Dolly" Moline, beloved sister of Joyce Kamen, beloved mother, beloved grandmother and great-grandmother - **Ron and Eileen Goldberg**

In memory of Dr. Sherwin L. Strauss, beloved husband of Ellen Strauss; beloved father of Dale Strauss, Roy Strauss, Lee "Lavey" Strauss, Jay Strauss and Debbie z"l Strauss; beloved brother of Gloria Goldberg and Jerome Strauss; beloved grandfather and great-grandfather - **Debbi and Ira Rosenberg**

In memory of Gerald B. Chattman, beloved father of Elise Dayan and beloved grandfather of Arielle, Alexandria and Noa Dayan

- **Julie Isaacson**
- **Bradley and Sherry Levin**

In memory of Leonard Birnbaum, beloved father - **Jacalyn and Marc Birnbaum**

In memory of Lillian Landow, beloved mother
- **Racquel Hochwert**

In memory of Lynne Neft, beloved sister of Phyllis Sadoff - **James and Suzanne Kach**

In memory of Myrna Schwartz, beloved mother of Lynn (Michael) Froy and Jeffrey (Kathleen) Schwartz, beloved grandmother and great-grandmother

- **Steven and Linda Feinstein**

- **Lauren Tomaszewicz**

In memory of Paul Len Turlock - **Martin Hogan and Family**

In memory of Ronald Bloom, beloved brother
- **Irwin and Linda Magad**

In memory of Rose Bolshon, beloved mother of Debra Kravitz, Donna Bolshon and Barbara Bolshon, beloved grandmother and great-grandmother

- **Scott and Karen Bieber**

- **Benjamin Kopin and Beth Shapiro Kopin**

- **Janie and Ira Libanoff**

- **Stephanie and Michael Smerling**

- **Irvina Warren**

In memory of Ruth M. Abrams, beloved mother - Robert and Sharon Abrams

Paul S. and Sylvia Steinberg Preschool Fund

In honor of Jerome and Mary Kaltman's anniversary - **Carole Brandwein**

In honor of the birth of Annette and Steve Ray's granddaughter - **Scott Rooth**

In honor of the birth of our granddaughter, Quinn Isabelle Silberman - **Lawrence and Susan Silberman**

In memory of Reuven Pinsler, beloved husband of Adrienne Pinsler, beloved father of Jacklin Levine and Igal Pinsler and beloved grandfather - **Edward Gildenberg**

Prayer Book Fund

In memory of Albert and Sylvia Wishnick, beloved parents - **Adrienne Eckerling**

Ritual Refurbishment Endowment Fund

In memory of Diane Levin, beloved wife of Stephen Levin, beloved mother of Amy Levin and Allison (Max Affrunti) Levin, beloved sister of Sharon Finegood, beloved daughter-in-law of Betty Ann Levin and beloved sister-in-law of Michael Levin, Sharon Wein and Lawrence Levin - **Barbara Blumberg, Ben, JoAnne and Paula**

In memory of Gloria Saag, beloved friend
- **Barbara Blumberg and Family**

In memory of Les Axelrod, beloved husband, father and grandfather - **Barbara Blumberg, Ben, JoAnne and Paula**

With appreciation and deep gratitude to Hazzan Barnett for her patience and teaching me to trope and how to read Torah - **Marla and Terry Grossberg**

Sarah and Henry Stiebel Solomon Schechter Endowment Fund

In memory of Florence Becker, beloved mother of Michael Becker, Donna Becker and David Becker, beloved sister of Leon Lome and beloved grandmother
- **Cara Medansky-Stiebel and Mayer Stiebel**

In memory of Muriel Kasanov, beloved sister of Lawrence Block, beloved mother, grandmother, great-grandmother and aunt - **Cara Medansky-Stiebel and Mayer Stiebel**

In memory of Rose Bolshon, beloved mother of Debra Kravitz, Donna Bolshon and Barbara Bolshon, beloved grandmother and great-grandmother
- **Cara Medansky-Stiebel and Mayer Stiebel**

Sherman Family Camp Ramah Endowment Fund

In memory of Muriel Kasanov, beloved sister of Lawrence Block, beloved mother, grandmother, great-grandmother and aunt - **Jonathan and Francine Sherman**

With appreciation to Bruce Cowans for officiating at the Piydon haBen of our grandson Lev Gabriel Rasowsky - **Jonathan and Francine Sherman**

NSS Beth El Sisterhood Special Gifts Fund

In honor of Pam Schlosberg's installation as President of Central Great Lakes Region of Women's League of Conservative Judaism

- **Andrew and Gail Brown**

- **Leon and Leslie Fox**

- **Joyce and Donald Joseph**

- **Barbara and David Lansing**

- **Ed and Paulette Margulies**

In memory of Diane Levin, beloved wife of Stephen Levin, beloved mother of Amy Levin and Allison (Max Affrunti) Levin, beloved sister of Sharon Finegood, beloved daughter-in-law of Betty Ann Levin and beloved sister-in-law of Michael Levin, Sharon Wein and Lawrence Levin

- **Laurel and Barry Abramowicz**

- **Steve and Wendy Abrams**

- **Cheryl and Ted Banks**

- **Laura Barry**

- **Corinne and Laurence Baskin**

- **Scott and Karen Bieber**

- **Gerald and Annette Blumberg**

- **Andrew and Gail Brown**

- **Jeffrey Crohn**

- **Sara and Steve Coven**

- **Adrienne Eckerling**

- **Rita and Jud Edidin**

- **Ruth Fischer**

- **Greg and Judith Fisher**

- **Valerie Garten**

- **Mark and Julia Gerstein**

- **Nancy Glen and Ralph McDowell and Family**

- **Steven and Susan Glover**

- **Ronald and Eileen Goldberg**

- **Jeffrey and Mindy Gordon**

- **The Heyden and Robin Families**

- **Sulie Holt and Lawrence Chester**

- **Julie Isaacson**

- **Thomas Jones**

- **Joyce and Donald Joseph**

- **Lori and Mitchell Kahn**

- **Ruth and Mal Kaufman**

- **Michael and Karen Kesner**

- **Jonathan and Leslie Kind**

- **Abby and Ed Lasky**

- **Ellen Lavin**

- **Laurie and Fred Leeb**

- **Friends and Family of Diane Levin**

- **Mallory Marcus, Emily Fishman, Danielle Sheridan, Tami Cohen, Jennifer Weiss, Jessica Jaksich, Rebecca Bloch**

- **Rachel and Steven Markowitz**

- **Gregory Newman**

- **Dr. Josh and Michelle Newman**

- **Brad and Marcie Pickard**

- **Debbi and Ira Rosenberg**

- **Daniel Rosenstein**

- **Holly and Joel Rosenstein**

- **Dorrie, David, Joshua, Ava and Scarlet Rosenstein**

- **Arnie, Shirley, Manny, Melanie and Matthew Rubin**

- **Shirley Rubin**

- **Pam and Richard Schlosberg**

- **Edna Schrank**

- **Steven and Frances Shapiro**

- **Renee Silverman**

- **Stephanie and Michael Smerling**

- **Michael and Judy Smith**

- **Stacy and Mark Sternberg**

- **Cara Medansky-Stiebel and Mayer Stiebel**

- **Millie Weber**

- **Frances Wein**

- **Philip and Sharon Wein**

- **Judy and Mark Weiner**

- **Karen Weiss**

In memory of Rose Chrustowski, beloved mother of Judy Chrustowski-Garfinkel and beloved grandmother of Jason and Alex - **Lisa Schulkin**

Tzedakah/Pushke Fund

In memory of Anna Pathman, beloved aunt
- **Millie Weber**

In memory of Mariasse Kurchitzer, beloved grandmother - **Millie Weber**

Youth Community Fund

In memory of Rose Bolshon, beloved mother of Debra Kravitz, Donna Bolshon and Barbara Bolshon, beloved grandmother and great-grandmother
- **Steven and Frances Shapiro**

June/July/August Events

Tuesday, May 25 - Friday, June 4 Season of Mitzvot

In partnership with Gratitude Generation, we will be collecting goodies for "Bye Bye Boredom Bags" and "Gratitude Gifts." Lists of items for these projects can be found on our websites' social action pages. We invite young families and all Beth El members to help support other families in need this summer. Simply shop and drop off at Beth El on dates above, and change a child's summer!



Tuesday, June 1 12:00pm Summer Reading Roundtable

Grab your lunch and join Rachel Kamin & Marcie Eskin for a lively discussion of what you've been reading and get some new summer reading recommendations from other readers. Come prepared to talk briefly about any book you've read recently (fiction or non-fiction on any topic) or just login to listen.

Tuesdays, 6:00 - 7:30 pm, 10 sessions June 1- August 3

Café Ivrit: Intermediate Conversational Hebrew

This intermediate level with Silvi Freedson course will help you improve your conversational and reading skills. Quarter Fee: Summer

Thursdays, 6:00 - 7:30 pm, 10 sessions June 3-August 5 Sicha Ivrit: Advanced Conversational Hebrew

Join this advanced level course with Silvi Freedson to study Israeli literature and culture in Hebrew! New students are always welcome. Quarter Fee: Summer

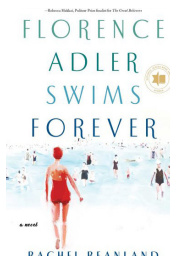
To register, please visit the synagogue's website at www.nssbethel.org/learn/lederman-continuing-education

Tuesday, June 8 Sisterhood Torah Fund Book Club

1:00 pm - Discussion Option 1 Outdoors @ Beth El

7:00 pm - Meet the Author on Zoom
7:45 pm - Discussion Option 2 on Zoom

Join Rachel Kamin to discuss *Florence Adler Swims Forever*, the 2020 National Jewish Book Award Debut Fiction Winner, and "meet" author Rachel Beanland. Contact rkamin@nssbethel.org for more information.



Wednesdays, June 9 & 23, July 7 & 21, and August 4 & 18 9:30-10:30am Writer's Beit Midrash

All fiction, non-fiction, poetry, memoir, and essay writers (published or not yet published) are welcome for discussions, exercises, camaraderie, and critique every other Wednesday morning outside at Beth El. Contact Rachel at rkamin@nssbethel.org for more information and to be added to the mailing list.

Wednesdays, July 7, 14, 21 & 28 1:00 pm Outside at Beth El 7:45 pm on Zoom Summer Stories Series



The ten stories in Nicole Krauss's new collection, *To Be a Man* deal with the struggle to understand what it is to be a man and what it is to be a woman, and all of the tensions in the relationships between parents and children, lovers and friends, husbands and

wives. All contemporary, they span the globe with many of the characters living with their feet in the United States and their hearts in Israel. Join Rachel Kamin to discuss selected short stories over four sessions this summer. Contact meskin@nssbethel.org to register.

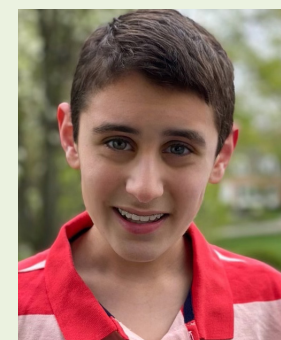
Sunday, August 15 10:00 am Season of Mitzvot

We will host an all Beth El on-site project to support families in need of back to school supplies. Stay tuned for more details during the summer.

Mazel Tov to Our B'nai Mitzvah Students



Bat Mitzvah - Cori Nathan
daughter of Susan and Marc Nathan
Shabbat, June 5



Bar Mitzvah - William Hirschfield
son of Michelle and Jack Hirschfield
Shabbat, June 12



Bar Mitzvah - Jordan Blaustein
son of Chantal and Ron Blaustein
Shabbat, August 21



Bar Mitzvah - Jack Gordon
son of Terri and Thomas Gordon
Shabbat, August 28

Season of Mitzvot Kick-Off and Beyond

By Abby Lasky, Director of Communications and Social Action Liason

The Social Action Committee is pleased to announce that as of July 1, Terri Gordon will become chair of our committee. Terri has been an integral part of the committee and the events that we have sponsored over the past several years. She brings a deep dedication and commitment to our outreach projects, and we know that she will be an outstanding chair.

Season of Mitzvot Kickoff Recap

On Sunday, April 18, the Social Action Committee hosted an on-site /virtual event that brought six local organizations to Beth El. Through onsite collections and a panel of presenters, attendees were offered many opportunities to learn about and support the efforts of these organizations. Here are some statistics from the event:

- Over 60 members attended the Kick-off in person or virtually
- 36 bikes were collected for Working Bikes which sends refurbished bikes to countries in Latin America. Two pickups were needed to accommodate our members' donations!
- An entire van was filled with electronic equipment for Blue Star Recycling. Blue

Star employs individuals with special needs, so all donations support the community in numerous ways.

- Our 6th Pod for ARK this year was 2/3 filled with donations after the event with personal hygiene items, toilet paper etc.
- 23 (and counting!) people signed up to participate in the Porch Project which gathers groceries from volunteer's porches that are taken to the COOL Pantry in Waukegan.
- Presentations on our panel were made by the ARK, Waukegan to College, and the Highwood Library. All outlined their missions and their need for volunteers and support.
- Coffee/Hot Chocolate and pre-packaged Dunkin Donuts were a wonderful addition!

Summer Spotlight

We will be working in partnership with Gratitude Generation which is an organization committed to instilling gratitude into future generations through education and service. Their extensive outreach programs are family-based and provide a wide array of services to underprivileged children, homeless youth, food pantries and homeless shelters. Projects will include:

• **Shop & Share** - participants must sign up in advance. Goal is to provide food for a family of four for a week, for \$50.

• **Bye Bye Boredom Bags** - purchase fun summer toys and games for children that do not have the means to attend camp or summer programs.

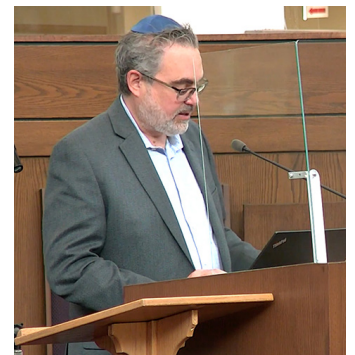
• **Gratitude Gifts** - a birthday kit in a bag for foster children's parents to be able to provide a meaningful celebration for their foster child.

Shop with your children or grandchildren and explain what a difference these groceries, toys, and gifts will make in the lives of children in need. Find details at: www.nssbethel.org/community/social-action/season-of-mitzvot

Purchase and drop off (Bye Bye Boredom and Gratitude Gift) items May 25 - June 4. Lists will be available on Beth El Social Action website pages and emails.

On August 15, we will have an onsite hands on activity to provide items for children returning to school in the fall. Stay tuned to your emails and check Social Action pages of our website for more details.

Season of Mitzvot Kick-off Event



The Planet on Your Plate

By Chef Laura Frankel, Director of Circle of Life Catering



While we have been busy at NSS Beth El GREENING up the kitchen and our operations, you may be wondering what you can do at home to help slow down climate change. One easy and delicious way to be a part of the solution is to enjoy more plant based meals.

Global meat consumption has grown by a staggering 20% over the last 10 years and this comes at an extreme cost to the health of our planet and self. The United Nations' Food and Agriculture Organization estimates that the meat industry generates nearly 1/5 of the man-made greenhouse gas emissions accelerating climate change worldwide – more than the entire transportation sector!

Epicurious, the popular recipe website has stopped all publishing of new beef recipes in an effort to promote more sustainable cooking.

Additionally, producing meat requires a huge amount of water. An estimated 1,800-2,500 gallons of water go into a single pound of beef. Imagine how much carbon and resources we could save if we ate less meat. It doesn't have to be all in or nothing but you can start somewhere.

For instance, if over the course of a year you:

- Ate one less burger a week, it would be the equivalent of taking your car off the road for 320 miles.

- Skipped meat and cheese one day a week with your family of four, it would be the equivalent of taking your car off the road for five weeks.

What we are eating is pushing the planet to the breaking point on climate change and deforestation, so commit today to making your next meal plant based and remove meat, dairy and eggs from your diet at least once one or two days per week. Let's fight climate change with diet change.

Grilled Shawarma Spiced Cauliflower Steaks

1 large head of cauliflower, rinsed and leaves peeled off

Extra virgin olive oil

2 tablespoons shawarma spices (purchased or homemade)

Sea salt and freshly cracked black pepper

1. Slice cauliflower into 1-inch-thick steaks. Leave the stem intact to hold the steak together. Place steaks on a lined sheet pan.

2. Brush with evoo and season with shawarma spices, salt and pepper.

3. Grill steaks on preheated grill for 10 minutes per side until browned and caramelized.

4. Serve with generous drizzle of Green Tahini and Crispy Date Relish.

Green Tahini

2 cloves garlic

½ cup tahini

1 cup chopped flat leaf parsley

Juice of ½ lemon

¼ cup water

1 teaspoon sea salt

1. In a food processor, pulse garlic, tahini, parsley, lemon juice, water and salt until a creamy, smooth texture is achieved. You may need more or a bit less water depending upon your tahini.

Crispy Date and Chili Relish

This mixture lasts for months, stored in the refrigerator. The relish is crispy, sweet, spicy and tangy. Make a batch and sprinkle it over

veggies, salads and anytime you want to add a complex POP of flavor.

4 medium shallots, sliced thinly

8 large cloves of garlic, sliced thinly

½ cup extra virgin olive oil

2 3" cinnamon sticks

1 cup pitted and chopped dates

1 2" piece of ginger, peeled and chopped very finely

2 tablespoon crushed red chili flakes

2 tablespoons soy sauce

1. Bring shallots, garlic, oil, cinnamon, and dates to a simmer in a medium saucepan over medium heat. Cook, reducing heat as needed to maintain a gentle simmer and swirling pot occasionally, until garlic and shallots are browned and crisp, 20-25 minutes.

2. Mix ginger, crushed red chili flakes and soy sauce, in a medium bowl. Strain shallot mixture through a fine-mesh sieve set over ginger mixture. Let garlic and shallot cool in sieve (this will allow them to crisp further) before stirring back into chile oil.

